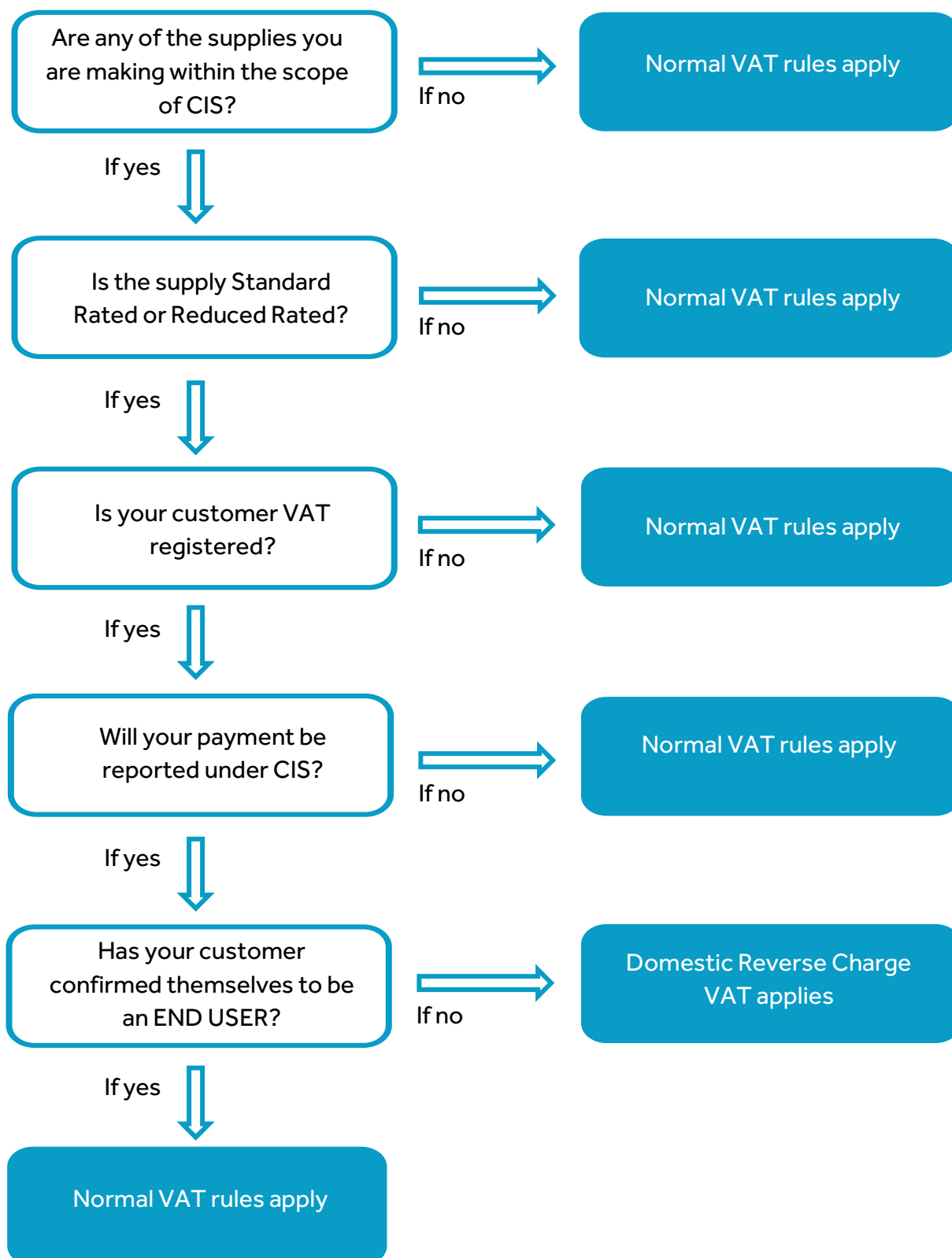


Decision Tree to determine whether to apply normal VAT rules or the Construction Services Domestic Reverse Charge (CSDRC)



If you require any advice in preparation for the changes or assistance in adapting your accounting systems please don't hesitate to get in touch with our Tax Partner, Steve Crompton, or our Cloud Accounting and Business Outsourcing Manager, Sarah Smith, on the details below:

Steve Crompton
Partner
D: 01942 292541
M: 07790 840394
E: steve.crompton@jsllp.co.uk

Sarah Smith
Manager
D: 01942 292527
E: sarah.smith@jsllp.co.uk